



**Larry LaBorde**  
President & Manager  
Hockey Director

Couples; Dance; Figures;  
Freestyle; Pairs  
865-588-1858; cell 865-386-6869  
llaborde@bellsouth.net

Larry spent five years touring with *Holiday On Ice*, the U.S. tour that is now called *Disney On Ice*. He holds Master ratings in Group Instruction, Program Administration, and Sports Sciences Medicine, as well as Senior ratings in Dance and Freestyle and Certified ratings in Pairs, all part of the system established by the Professional Skaters Association (PSA). He holds the Registered rating in "Moves in the Field" is rated in Hockey I and II. Larry is a Gold Medalist in Ice Dance in the U.S. Figure Skating system.

---

**Please talk to instructors  
at least two months ahead of  
time for competitions or tests!**

- ◆ Beginner and intermediate-level skaters who want to compete will also need programs choreographed to music.
- ◆ Freestyle-level skaters must prepare and present a program to music, incorporating all the maneuvers of a particular level in order to pass that level.

Some skaters choose their own music and experiment with choreography, but we strongly recommend asking for help from an instructor (see note on "Music Editing Prices"). There are rules that must be carefully observed, such as duration and moves allowed. Also, the music must be appropriate for the skater's age and skill level, and pacing is important.

---

**How Many Lessons Are Needed?**

Programs are usually refined and perfected in private lessons at least once a week over several weeks, and repetition will help the skater do his/her best on "the big day." Younger students often require more practice.

---

**Purchase Private Lesson  
Coupons at the Main  
Counter**

Privates are purchased in the form of coupons, which are presented to your instructor at the time of your lesson. Privates consist of a 20-minute lesson and may be conducted during "freestyle" practice sessions or *uncrowded* public sessions, and admission to these sessions must be paid for separately from the private lesson coupons. (Note: For lessons held during public sessions, use of the music box is allowed only with permission of the management.)



---

**Private Lesson Prices**

\$21.00 If purchased one at a time  
\$19.00 If purchased in a book of 5 (\$ 95.00) *10% Off!*  
\$18.50 If purchased in a book of 10 (\$ 185.00) *12% Off!*

---

**Make arrangements for private lessons  
with the instructor of your choice!**

---

**Ice Time Must Be Paid For Separately**

Whether lessons are scheduled during "freestyle" practice times or uncrowded public sessions, skaters must pay for the ice time separately from the private lesson itself. If you purchase the "All You Can Skate" package, all practices and public sessions are included!

---

**Freestyle Practice Prices**

**(Open to Tots through Delta on Mondays & Sundays)**  
\$ 9.00 If purchased in a package, each session usually two (2) hours in length  
\$ 11.00 Drop-In  
*Early Bird Practices (3 hours, 3 times each week):*  
In a package, about \$ 2.30 per session!

---

**Music Editing Prices**

\$ 10.00 for one CD with 1-2 simple cuts.  
Note: If extensive editing is required, the cost may be higher.  
\$ 1.00 for each additional copy. Students should have at least one back-up copy available. (Pay the teacher directly.)

---

**Cancellations**

It is the skater's responsibility to notify the instructor of cancellations at least 24 hours ahead of time so that the instructor can schedule another student for the allotted time.



---

**Private Lessons  
at the Ice Chalet**

---

---

**Our Instructors**

---

**Private lessons are available  
to students enrolled in the  
group lesson program of the  
Robert Unger School of  
Ice Skating**



**Robert Unger**  
1925-2007

A native of Nuremberg, Germany, Robert Unger was a highly acclaimed skater who won titles in ice and roller skating championships in Europe. He was a featured performer in worldwide productions of *Holiday On Ice* and in European shows for 18 years before making his home in Knoxville in 1963. Also a master-rated teacher, he was a leader in the development of the Ice Skating Institute's recreational skating program.

---

**Ice Chalet**  
P.O. Box 10668  
Knoxville TN 37939  
tel 865-588-1858 fax 865-588-7509  
icechalet@bellsouth.net  
www.chaleticerinks.com  
*Beside the Shops at Western Plaza*

**Teachers currently available for private lessons:**

(See also Larry LaBorde on reverse)

All of our teachers are Professional Members of the international Ice Skating Institute. Each one serves a rigorous apprenticeship in our school before being assigned to classes.

**Gina Alexander**

**Basics; Freestyle**

Gina began skating at the Ice Chalet at age 10 and participated in several performances and ISI competitions. She holds a B.A. from UT in Political Science. Gina is excited to be teaching and enjoys introducing her daughter to the fun of ice skating.



**Lynne Attaway**

**Basics; Freestyle** lynne4@gmail.com

Lynne began taking skating lessons while in college. After raising four children, she returned to skating and progressed in dance, freestyle, and figures. Lynne began teaching in 1999 and is an ISI gold-level judge. She has Masters degrees in City Planning and in Occupational Therapy.



**Konstantin Baradakov**

**Basics; Freestyle; Pairs**

kosbaradakov@hotmail.com

Konstantin is from St. Petersburg, Russia. He has extensive training in Figures, Freestyle, Pairs & Ballet, and competed often. Konstantin has a Sports Science & Physiology degree from the Lesgaft College of Sports. He is an ISI bronze-level certified judge. Konstantin toured with "St. Petersburg Ballet On Ice" and was a principal performer with *Holiday On Ice* & *Disney On Ice*.



**Sarah Brown Bauguess**

**Basics; Dance; Freestyle**

Sarah began skating at the age of six at the Ice Chalet. She passed ISI Freestyle 6 and Dance 9 as well as USFSA Juvenile Free, Pre-Silver Dance, and Novice Moves-in-the-Field. Sarah majored in Figure Skating Science at the University of Delaware.



**Jennifer Roberts Bradley**

**Basics;**

Freestylejennifer\_roberts2001@yahoo.com

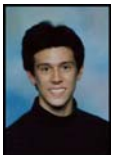
Jennifer has been skating and teaching for many years. She also toured with Ice Capades and Rosstyn Ice Shows. Jennifer has a B.S. in Business Administration from UT. She and her husband have a new baby girl, Rebecca Addison.



**Brandon Cross**

**Basics**

Brandon joined our teaching staff in 2008. He has passed ISI Freestyle 8 and Dance 8 and has performed in numerous Ice Chalet shows and ISI competitions.



**Hannah Cunningham**

**Basics**

Hannah has been skating at the Ice Chalet since she was very young. She has participated in many ISI competitions, as well as annual productions of Nutcracker On Ice.



**Snigdha Dhar**

**Basics**

Snigdha has participated in many ISI competitions and the annual productions of Nutcracker On Ice at the Ice Chalet over the years. Snigdha also teaches dance. She has passed ISI Freestyle 5 and Dance 7.



**Shawnda Ernst**

**Basics; Couples; Dance; Freestyle**

Shawnda served as our Skating School Director and Competition Director for many years and has been teaching at the Ice Chalet since 1990. She earned a graduate degree in Education and teaches at Pond Gap Elementary School. She is also an ISI gold-level judge. She and husband Donnie have two children.



**Hannah Foust**

**Basics; Dance; Freestyle**

Hannah has been an avid skater at the Ice Chalet since 2002. She has participated in many ISI competitions and the annual productions of Nutcracker On Ice. She continues to progress in ISI freestyle & dance.



**Gregory Fuller**

**Basics; Dance; Freestyle**

Gregory has played hockey and figure skated most of his life, and has managed four different skating rinks. He earned a B.S. in Foreign Service (Georgetown) and is certified in K-3 education. He is certified as a skating instructor at the Core (Tots - Delta) level by the Ice Skating Institute.



**Mary Beth Massey**

**Basics; Freestyle** rogmey@msn.com

Mary Beth is enrolled in law school.



**Teachers currently touring with Disney On Ice**

**Adam Blake**

Currently touring with Disney's "100 Years of Magic"



**Kassandra Hazard**

Currently touring with Disney's "Worlds of Fantasy"



**Julia Hardin**

**Skating School Director  
Assistant Marketing Director  
Basics; Dance; Freestyle  
skatingfan@mindspring.com**

Julia was among Mr. Unger's first students at the Ice Chalet. She earned a law degree, served as associate dean at UT, and directed a national citizenship program. Julia is an ISI gold-level judge and is also certified by ISI as a skating instructor at the Core (Tots-Delta) and Intermediate (Freestyle 1-5) levels.



**Mary Lu Shipstad**

**Marketing Director  
Assistant Skating School Director  
Basics; Couples; Dance; Freestyle; Pairs**

lulusk8r@yahoo.com



Mary Lu has over 15 years of professional show skating experience; she was a principal

soloist for *Disney on Ice* and served as show director. She passed USFSA Gold level tests in Figures and Freestyle and Pre-Silver tests in Dance. Mary Lu is also an ISI gold-level judge and is certified by ISI as a skating instructor at the Core (Tots - Delta) and Intermediate (Freestyle 1-5) levels.

**Angie McCarter**

**Competition Director  
Basics; Dance; Freestyle  
angiemccarter@comcast.net**

Angie has been skating and teaching at the Ice Chalet for more than ten years and has participated in many skating competitions, shows, and seminars. She also toured with *Grease on Ice*. An art teacher for Knox County, she has a bachelor's in fine art and a Master's in education. Angie is an ISI gold-level judge.



**Teachers not currently available for private lessons**

**Dan Baird**

Vice President,  
Chalet Ice Rinks, Inc.



**Jessica Marshall**



**April Morgan**

Board Member,  
Chalet Ice Rinks, Inc.



**Theresa-Vay Smith**

Board Member,  
Chalet Ice Rinks, Inc.



**Laurie Valiga**

Board Chair,  
Chalet Ice Rinks, Inc.



**Kate Webb**

